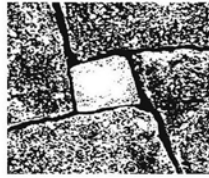


THE STONE FOUNDATION

116 Lovato Lane, Santa Fe, New Mexico 87505
www.stonefoundation.org 505 - 989 - 4644



&
stonexus
MAGAZINE

MEMBERSHIP/SUBSCRIPTION REGISTRATION FORM

NAME _____ PROFESSION _____

BUSINESS NAME _____

ADDRESS _____

PHONE(S) _____ FAX _____

EMAIL _____ WEBSITE _____

Please include an email address and inform us if that changes. **STONEZINE**, the digital edition of **STONEXUS** Magazine, as well as renewal reminders and **STONETC. . .**, the Stone Foundation Newsletter and are distributed via email. (We DO NOT share members' email addresses with anyone!)

NATURE AND EXTENT OF YOUR INTEREST IN AND/OR INVOLVEMENT WITH STONEWORK:

HOW DID YOU LEARN ABOUT THE STONE FOUNDATION? _____

STONE FOUNDATION MEMBERSHIP BENEFITS:

(1) **STONEXUS** Magazine—The Stone Foundation's highly regarded full-color glossy print publication produced once a year; (2) **STONEZINE**—a digital publication issued in several installments; (3) **STONETC. . .** the Stone Foundation newsletter; (4) access to **STONEMAD**, the Stone Foundation's **ON-LINE FORUM**; (5) the option to purchase a listing in the **ON-LINE DIRECTORY**; (6) discounted registration fees for the Stone Foundation's **STONEWORK SYMPOSIA**, seminars, **WORKSHOPS** and other events; (7) participation in exclusive Stone Foundation events; (8) a sense of community and, not least (9) the satisfaction of supporting the Stone Foundation and thereby the traditions of the art and the craft of stonework.

STONE FOUNDATION MEMBERSHIP is valid for the 12 months following initial registration, and the 12 months following membership renewal. **NEW MEMBERS** will receive the most recently published issue of **STONEXUS** Magazine immediately—and the next issue when it is published.

MEMBERSHIP TYPES AND RATES:

- _____ \$50 – **INDIVIDUAL MEMBER**
_____ \$100 – **CORPORATE/CONTRACTOR/INSTITUTIONAL MEMBER**
(Employees of Contractor/Corporate/Institutional Members are entitled to an Individual Membership at a 20% discount.)
_____ \$40 – **EMPLOYEE OF CORPORATE/CONTRACTOR MEMBER** (Employer and employee should file separate forms.)
Name of Contractor or Corporation Member: _____

ALSO:

- _____ \$50 – **ON-LINE DIRECTORY LISTING** at www.stonefoundation.org
(For 12 months, a members-only option. Enter information to be listed on page 2 of this form.)
\$ _____ **EARLIER ISSUES OF STONEXUS**: \$15 each (while they last.) FULL SET of 11 ISSUES—\$150
INAUGURAL ISSUE __, #II __, #III __, #IV __, #V __, #VI __, #VII __, #VIII __, #IX __, #X __, #XI __
FULL SET OF 11 ISSUES _____ (Table of contents and specimen articles from each issue are available at www.stonefoundation.org.)
Shipping Charges for a Full Set: US: \$5, CANADA & EUROPE: \$25 (approximately 50% of actual Shipping or Postal charges)
\$ _____ **T-SHIRTS** (members only, see page 2)
\$ _____ **TOTAL PAYMENT**

DONATIONS are, of course, welcome.

AND Tax Deductible via our Fiscal Sponsor, Fractured Atlas: <https://www.fracturedatlas.org/site/fiscal/profile?id=6844>

US Residents: Checks may be made out to the STONE FOUNDATION and sent with this registration form to 116 Lovato Lane, Santa Fe, NM 87505, USA.

Foreign (and) US Residents: Payment may be made via PayPal (<http://stonefoundation.org/join.html>) and the registration form emailed to tomas@stonefoundation.org
To encourage foreign membership, Canadian, Mexican and overseas postal charges will be waived (except for T-shirts or Full Sets of STONEXUS)

STONEMASON MEMBERS DIRECTORY Check here _____
Description of types of work performed, degree of experience, etc.
(40 words or less). List your phone number? Yes _____ No _____

ASSOCIATE MEMBERS DIRECTORY Check here _____
For stone suppliers, architects, landscape architects, designers,
contractors, artists and others who wish to be listed.
Description of services and/or products (40 words or less).

T-SHIRTS

BEST QUALITY, PRE-SHRUNK, 100% COTTON SHIRTS
SIZES: M, L, XL, XXL

PRICE: \$25 PER SHIRT (INCLUDES POSTAGE) OVERSEAS: \$35 PER SHIRT

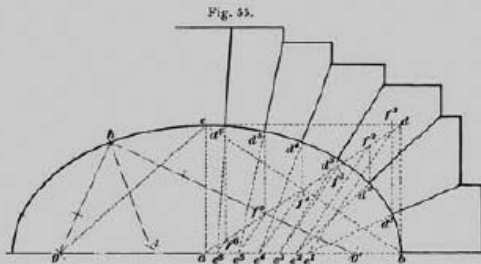
IWA (JAPANESE FOR 'ROCK')
LIGHT GREY ON DARK BLUE-GREY
SIZE _____ NUMBER _____

STONEXUS
WHITE, GREY ON BLACK
SIZE _____ NUMBER _____

THE STONE FOUNDATION
BLACK ON LIGHT GREY
SIZE _____ NUMBER _____



· IWA · ROCK ·



THE STONE FOUNDATION
www.stonefoundation.org

FIG. 55. A method of finding the various joints in a true elliptical arch is given in Fig. 55. This shows a', a'', a''', a'''' , d' , and d'' as the points through which it is desired to draw the joints. Draw tangents to the ellipse at the points d' and d'' , intersecting at d' ; also, the lines $a'd'$ and $a''d''$; draw from a', a'', a''', a'''' , lines intersecting at d' and d'' , etc. From these points, draw lines perpendicular to the intersecting lines $a'd'$, $a''d''$, etc., then lines drawn through d' and d'' , etc., will be normal to the curve and give the required joints.

stonexus

MAGAZINE